



VILLAGE ESTATES

• EST.1993 •



93 Main Road, Sidcup, Kent DA14 6ND

Tel: 0208 302 1002

www.village-estates.com

Email: sidcup@village-estates.com



**GREAT PRESENTATION
THROUGHOUT**

IDEAL FIRST TIME BUY

CLOSE TO SCHOOLS

THREE BEDROOMS

EXCELLENT TRANSPORT LINKS

COMPLETE ONWARD CHAIN



134 Foots Cray Lane
Sidcup, DA14 4NS

**Guide Price £435,000-
£450,000**

COMPLETE ONWARD CHAIN! New to the market is this well presented three-bedroom home, close to all local amenities, schools and transport links. This great sized property is ideal for any first-time buyers or young families looking for their next home. The property boasts a modern kitchen and an open plan dining living area, with doors opening up onto the decked patio area. There are three great sized bedrooms upstairs with plenty of living space, alongside the modern family bathroom. The rear garden offers the perfect suntrap, with a laid lawn and additional storage in the shed and garage. We highly recommend viewing this exceptional home.

EPC RATING: D

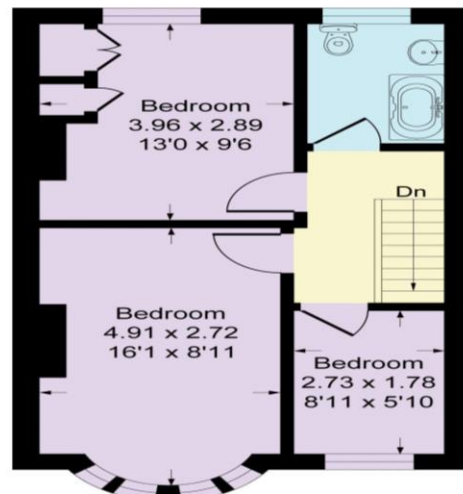
COUNCIL TAX BAND: D

TENURE: Freehold

LEASE TERM: Not Applicable



Ground Floor



First Floor

CONSUMER PROTECTION FROM UNFAIR TRADING REGULATIONS 2008

Please note that any services, heating system or appliances have not been tested, and no warranty can be given or implied as to their working order. You are advised to obtain verification from your solicitor or surveyor. References to the tenure of a property are based on information supplied by the seller. We have not had sight of the title documents and a buyer is advised to obtain verification from their solicitor. Items shown in photographs are not included unless specifically mentioned within the sales particulars, but may be available by separate negotiation. Whilst every attempt has been made to ensure the accuracy of the floor plan contained here, measurements of doors, windows, rooms and any other items are approximate and no responsibility is taken for any error, omission, or mis-statement. We advise you to book an appointment to view before embarking on any journey to see a property, and check its availability. The accuracy of these details are not guaranteed and they do not form part of the contract.